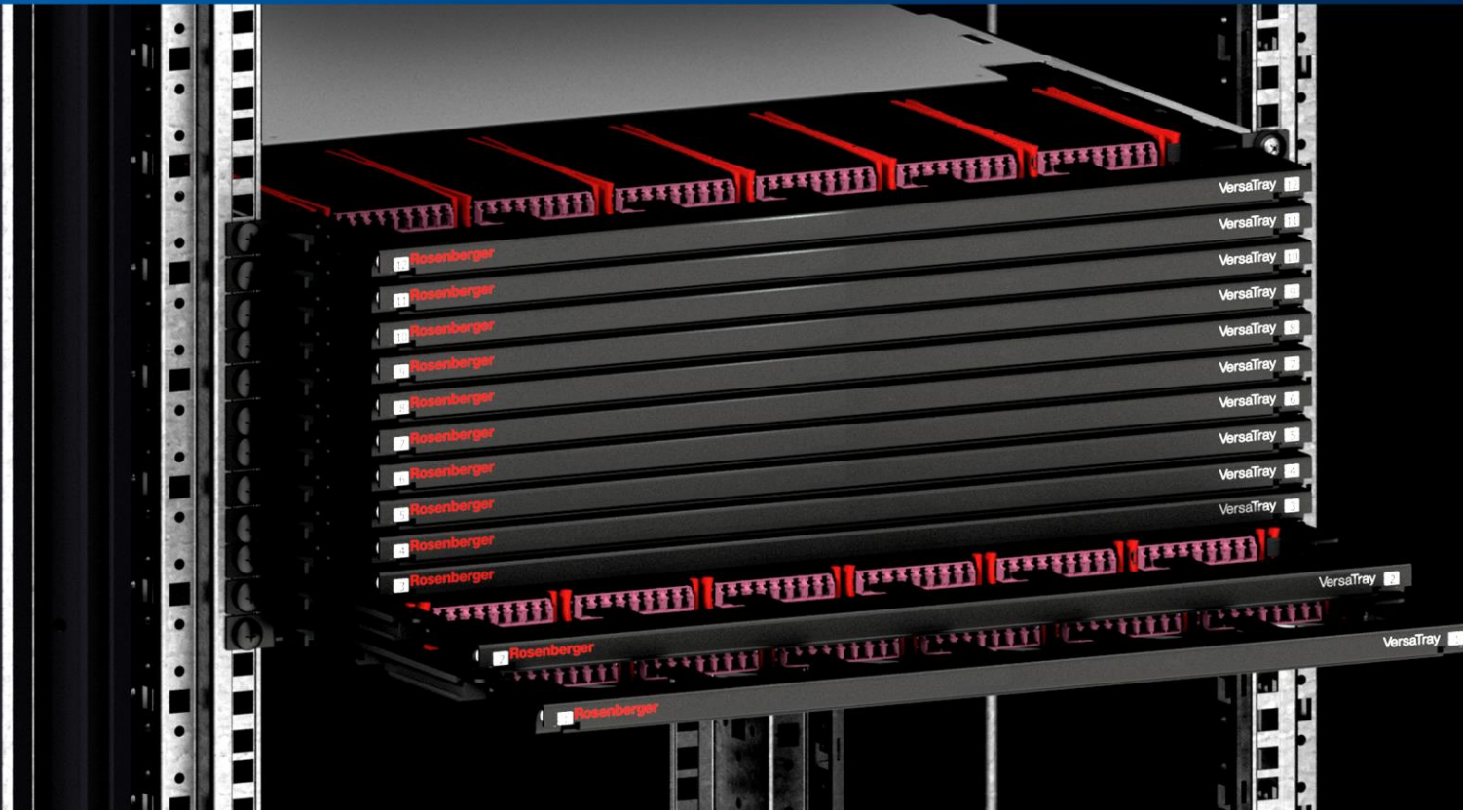


VersaTray[®] Tray System

PRODUCT INFORMATION



With VersaTray®, Rosenberger OSI is now able to offer an outstandingly modular, easy-to-maintain 19" tray system for high-density cabling solutions in data centers. The forward-looking design opens up hitherto unexplored possibilities for accessing the interior of the rack and applying the pay-as-you-grow principle. Since the design is based on the use of extensible support elements and 1/3-HU trays, the overall height of the tray system can be individually adapted to meet specific customer requirements. Thanks to the overall system granularity of 1/3 HU, even the smallest installation spaces in the rack become productive.

The trays have two pull-out positions to make the fiber-optic modules inside them more accessible than in the past. The trays can also be completely removed from the unit thanks to an innovative, easy-to-operate unlock mechanism. The tray widths are subdivided 4/4 and 6/6, making it possible to accommodate modules of two different sizes. Both types of module are available as MTP® modules, coupler modules or alternatively as splice modules and can be equipped with all standard couplers (LC, SC, MDC, SN®, MTP®, E-2000®).

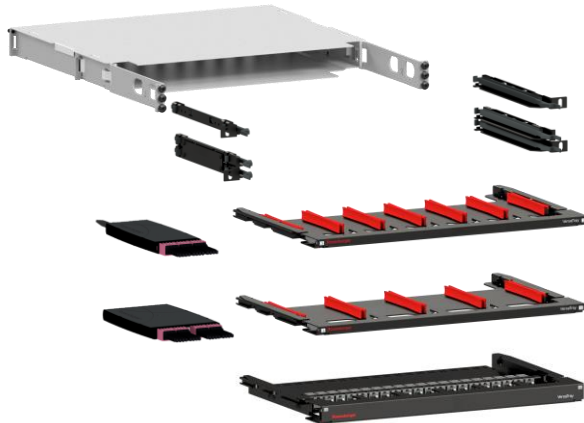
No tools are needed when installing the modules thanks to the use of a uniquely designed leaf spring system. What is more, the modules can be installed from the front, back, from above or even at an angle. Handling is greatly simplified by the fact that there is no need to align the modules precisely with their mounts. The patchcords are guided by height unit-independent patchcord guides which are located at the front of every module. In addition to the fiber-optic connection technology variants listed above, VersaTray® also supports the transfer of electrical signals. The tray developed for this function measures 2/3 HU and possesses mounts for RJ45 keystone modules as well as for keystone modules for fiber-optic signal transmission.

The VersaTray® tray system

Highly modular, easy-to-service concept for high-density transmission paths in 19" data center racks

Consisting of:

- Right-hand and left-hand support elements for insertion of 1/3-HU and 2/3-HU trays.
- 1/3-HU trays to accommodate fiber-optic modules, available in 4/4 or 6/6 width division
- 2/3-HU trays for RJ45 and fiber-optic keystone modules
- MTP® modules, coupling modules, splice modules, blank modules
- 1 HU trunk and cable support, extensible to 2 HU and 4 HU



Port densities:

	1/3 HU		1 HU	
	Ports	Fibers	Ports	Fibers
LC duplex	24	48	72	144
SN®	48	96	144	288
MDC	72	144	216	432
SC duplex	8	16	24	48
E-2000®	16	16	48	48
MTP® OCTO	24	192	72	576
MTP® DUODECIM	24	288	72	864
MTP® SEDECIM	24	384	72	1152

Applications:

- Server and whitespace rooms in data centers
- Meet-me rooms and distribution in colocation data centers
- Telecommunications applications with splice capability for single and ribbon fibers
- Spine-leaf architectures
- For all IT applications such as Ethernet and Fiber Channel

The benefits at a glance:

Service-friendly installation

- Shorter access distances thanks to optimized access to the rack interior from the front of the rack
- Outstanding access to modules and ports thanks to the multiple tray pull-out positions and the possibility of removing trays completely.
- Ability to insert and remove fiber-optic modules from the front, back, top or even obliquely
- Shuttered LC and MPO connections to ensure improved laser safety
- Reduced cable volume thanks to VersaTray® I-F divider trunks

Exceptional versatility and modularity

- Can be equipped and combined with all commonly used couplers
- Integration of splice solutions for single and ribbon fibers
- Possibility of accommodating RJ45 or fiber-optic keystone modules

Modular system (pay-as-you-grow)

- The entire system can be constructed using 1/3-HU support elements
- The trunk support can be extended to 2 HU and 4 HU

Technical data:

Dimensions:



Material and colour:

- Trays: Steel, CDC-coated, black
- Support elements for accommodation of trays in 19" racks: Steel, CDC-coated, black
- Trunk support: Steel, CDC-coated, black
- Module mounts: PA, glass-fiber reinforced, red, flammability rating: UL HB
- Modules: PC/ABS, black, flammability rating: UL V0 & 5VB

Weight:

- 1/3-HU tray for modules with 1/4 width division: 1200 g
- 1/3-HU tray for modules with 1/6 width division: 1250 g
- 1-HU kit tray (2/3-HU + 1/3-HU support elements for 3 x 1/3-HU trays, incl. trays): 4200 g
- 1-HU trunk and cable support: 2370 g

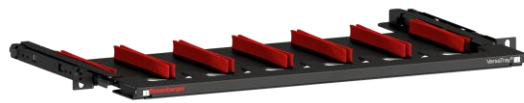
Thanks to the modular design and the low weight of the support units, installation can be performed by a single person.

Ordering data for tray system units:

In each case, tray system units consist of trays together with the associated support elements for installation in 19" racks. You can find the modules suitable for the tray system units as a function of the chosen cabling system ([PreCONNECT® OCTO](#), [PreCONNECT® DUODECIM](#) or [PreCONNECT® SEDECIM](#)) on pages 11 to 19.

The 1-HU, 2-HU and 4-HU kits are all supplied with trunk support.

Other configurations are available on request.



1/3-HU kit tray



2/3-HU kit keystone tray



1-HU kit tray



1-HU kit



2-HU kit



4-HU kit

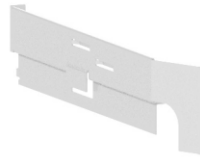
Region	Order number	Description
EU	ETSVTU3C6B	VersaTray® 1/3-HU kit tray for 1 x 1/3-HU tray with 6/6 width division, black, empty, without trunk and cable support
EU	ETSVT1UC6B	VersaTray® 1-HU kit tray for 3 x 1/3-HU trays with 6/6 width division, black, empty, without trunk and cable support
EU	ETSVT1UT6BT	VersaTray® tray system 1-HU kit for 3 x 1/3-HU trays with 6/6 width division, black, empty, incl. trunk and cable support (including 1 x back plane with 12 PreCONNECT® square interfaces)
EU	ETSVT2UT6BT	VersaTray® tray system 2-HU kit for 6 x 1/3-HU trays with 6/6 width division, black, empty, incl. trunk and cable support (including 1 x back plane with 12 PreCONNECT® square interfaces and 1 x blank back plane)
EU	ETSVT4UT6BT	VersaTray® tray system 4-HU kit for 12 x 1/3-HU trays with 6/6 width division, black, empty, incl. trunk and cable support (including 2 x back plane with 12 PreCONNECT® square interfaces and 2 x blank back planes)
EU	ETSVTU3C4B	VersaTray® 1/3-HU kit tray for 1 x 1/3-HU tray with 4/4 width division, black, empty, without trunk and cable support
EU	ETSVT1UC4B	VersaTray® 1-HU kit tray for 3 x 1/3-HU trays with 4/4 width division, black, empty, without trunk and cable support
EU	ETSVT1UT4BT	VersaTray® tray system 1-HU kit for 3 x 1/3-HU trays with 4/4 width division, black, empty, incl. trunk and cable support (including 1 x back plane with 12 PreCONNECT® square interfaces)
EU	ETSVT2UT4BT	VersaTray® tray system 2-HU kit for 6 x 1/3-HU trays with 4/4 width division, black, empty, incl. trunk and cable support (including 1 x back plane with 12 PreCONNECT® square interfaces and 1 x blank back plane)
EU	ETSVT4UT4BT	VersaTray® tray system 4-HU kit for 12 x 1/3-HU trays with 4/4 width division, black, empty, incl. trunk and cable support (including 2 x back plane with 12 PreCONNECT® square interfaces and 2 x blank back planes)
EU	ETSVTU2CKB	VersaTray® 2/3-HU kit keystone for 1 x 2/3-HU tray to accommodate 20 RJ45 or fiber-optic keystone modules, black, empty, without trunk and cable support

Ordering data for accessories:

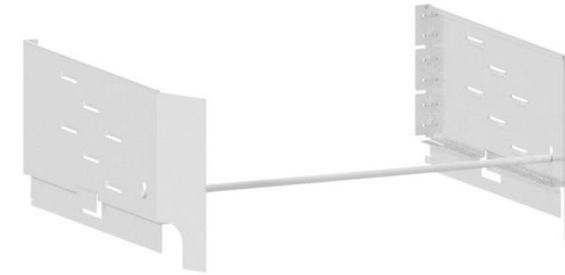
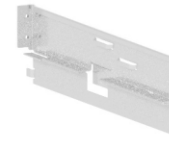
1-HU trunk and cable supports can be expanded to 4 HU by adding extensions.



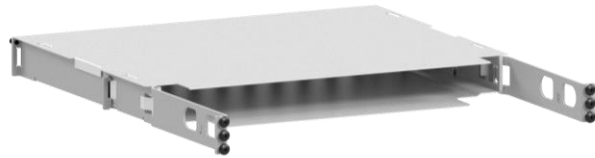
Connecting element for 2 x 1/3-HU support elements



Trunk support extension: 1 HU to 2 HU



Trunk support extension: 1 HU to 4 HU



1-HU trunk and cable support for installation behind the tray system (without back plane)



1-HU excess cable length compartment for installation under the tray system (without back plane)

Region	Order number	Description
EU	EYVTBU2BBS3	VersaTray® connecting elements for 2 x 1/3-HU support elements, 2 pcs. for mounting left and right, black
EU	EYVTTCH1UDMNBP	VersaTray® 1-HU trunk and cable support, without back plane, for installation behind the VersaTray® tray system, metallic
EU	EYVTTCH1UDMOO12	VersaTray® 1-HU excess cable length compartment, without back plane, for installation under the VersaTray® tray system, metallic
EU	EYVT2UTEXM	VersaTray® trunk support extension: 1 HU to 2 HU, metallic
EU	EYVT4UTEXM	VersaTray® trunk support extension: 1 HU to 4 HU, metallic

Ordering data for back planes for trunk supports

All back planes are made from steel, RAL 9005, black powder-coated.

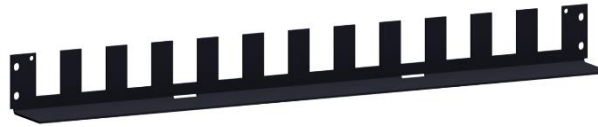
Blank back plane

Order number 170A1501



12 PreCONNECT® square interfaces

Order number 170A1502



With 8 holes of diameter 29 mm suitable for PG21 cable glands

Order number 170A1504



Z-blade with 4 PreCONNECT® square interfaces
Cable routing to the inside

Order number 170A1512



Z-blade with 4 PreCONNECT® square interfaces
Cable routing to the outside

Order number 170A1516



Z-blade with 2 PreCONNECT® square interfaces, right, cable routing to the inside.
Universal support of cables using cable ties, left
Order number 170A1517



Z-blade with 2 PreCONNECT® square interfaces, right, cable routing to the outside. Universal support of cables using cable ties, left.

Order number 170A1519



Z-blade with 2 PreCONNECT® square interfaces, left, cable routing to the outside. Universal support of cables using cable ties, right.

Order number 170A1518



Z-blade with 2 PreCONNECT® square interfaces, left, cable routing to the inside. Universal support of cables using cable ties, right.

Order number 170A1515



Modular back plane 4x1

4 plates that can be installed without tools, each with 1 PreCONNECT® square interface.

Order number 170A1521

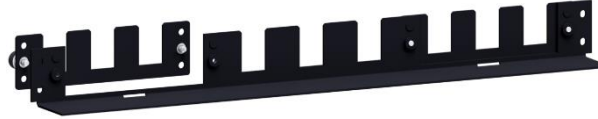


Modular back plane 2x3

One plate that can be installed without tools on the right and left, each with 3 PreCONNECT® square interfaces.

Middle: 3 fixed PreCONNECT® square interfaces

Order number 170A1520



Modules:

System options:

- Module MTP® to LC, SN® or MDC
- Coupler module: Unit with couplers for the direct connection of trunks
- Splice module: Option for splicing with single fibers or ribbon fibers
- Other modules
 - E-2000®
 - SC
 - Blank module for occupying unused module positions on the tray for cold/hot aisle separation

Dimensions:

- Width: 1/6 and 1/4 width division
- Height: 1/3 HU
- Depth: 165 mm

Polarity of modules MTP® to LC, MDC, SN®

- Rx to Tx
- MTP® without pins on back:
 - OM4 MTP® connection type B “centered aligned keys”, grey, (black for modules MTP® to LC)
 - OM4 MTP® connection type A “off-centered aligned keys”, white,
 - Singlemode MTP® connection type A, “centered opposed keys” green
 - Singlemode MTP® connection type A, “off-centered opposed keys” green (for MTP® 16 SEDECIM)

Coupler characteristics (module front side)

- Shuttered MPO coupler with integrated dust protection closure for one-handed installation of MTP®/MPO
- Shuttered LC coupler with integrated dust protection closure for one-handed installation of LC, individual shutter for each channel of the LC coupler increases laser safety during installation
- MPO and LC couplers have VFL (Visual Fault Locator) transparency level
- Colour coding:
 - blue – Singlemode
 - green – Singlemode APC (note on MPO interface: type A “centered opposed keys”)
 - purple – OM4
 - grey – OM4 (note: Only used for MPO interface: type B “centered aligned keys”)



Modules suitable for cabling with breakout trunks with I-F nx8 fibers = 4 channel PreCONNECT® OCTO



	Suitable for trays with 1/6 width division				Suitable for trays with 1/4 width division			
Module variant	8F LC	16F SN®	8F MDC	4 ports MPO	24F SN®	16F MDC	32F MDC	6 ports MPO
Module to MTP®	x	x			x		x	
Coupler module:	x	x	x	x	x	x		x

Ordering data for modules:

Region	Order number	Description	Product	Connector system, front	Connector system, back	Size	Fiber count	Fiber type
EU	EMVT36BB08SMORLEBS	VersaTray® module 8F SM, blue LC coupler with internal shutter to MTP® 4+4 OCTO, centered opposed keys coupler, green, 1/3 HU, 1/6 width, black	Module	LC	MTP®	1/6	8	SM
EU	EMVT36BB08SMORLEGS	VersaTray® module 8F SM, green LC coupler with internal shutter to MTP® 4+4 OCTO, centered opposed keys coupler, green, 1/3 HU, 1/6 width, black	Module	LC	MTP®	1/6	8	SM
EU	EMVT36BB08CMAGLEVS	VersaTray® module 8F OM4, purple LC coupler with internal shutter to MTP® 4+4 OCTO, centered aligned keys coupler, black, 1/3 HU, 1/6 width, black	Module	LC	MTP®	1/6	8	OM4
EU	EAVT36B08LEBS	VersaTray® coupler module 8F SM, blue LC coupler with internal shutter, 1/3 HU, 1/6 width, black	Coupler module	LC	-	1/6	8	SM
EU	EAVT36B08LEGS	VersaTray® coupler module 8F SM, green LC coupler with internal shutter, 1/3 HU, 1/6 width, black	Coupler module	LC	-	1/6	8	SM
EU	EAVT36B08LEVS	VersaTray® coupler module 8F OM4, purple LC coupler with internal shutter, 1/3 HU, 1/6 width, black	Coupler module	LC	-	1/6	8	OM4

EU	EMVT36BB16SMORSNBO	VersaTray® module 16F SM, blue SN® coupler to 2 x MTP® 4+4 OCTO, centered opposed keys coupler, green, 1/3 HU, 1/6 width, black	Module	SN®	MTP®	1/6	16	SM
EU	EMVT36BB16CMAGSNVO	VersaTray® module 16F OM4, purple SN® coupler to 2 x MTP® 4+4 OCTO, centered aligned keys coupler black, 1/3 HU, 1/6 width, black	Module	SN®	MTP®	1/6	16	OM4
EU	EAVT36B16SNB	VersaTray® coupler module 16F SM, blue SN® coupler, 1/3 HU, 1/6 width, black	Coupler module	SN®	-	1/6	16	SM
EU	EAVT36B16SNV	VersaTray® coupler module 16F OM4, purple SN® coupler, 1/3 HU, 1/6 width, black	Coupler module	SN®	-	1/6	16	OM4
EU	EMVT34BB24SMORSNBO	VersaTray® module 24F SM, blue SN® coupler to 3 x MTP® 4+4 OCTO, centered opposed keys coupler, green, 1/3 HU, 1/4 width, black	Module	SN®	MTP®	1/4	24	SM
EU	EMVT34BB24CMAGSNVO	VersaTray® module 24F OM4, purple SN® coupler to 3 x MTP® 4+4 OCTO, centered aligned keys coupler black, 1/3 HU, 1/4 width, black	Module	SN®	MTP®	1/4	24	OM4
EU	EAVT34B24SNB	VersaTray® coupler module 24F SM, blue SN® coupler, 1/3 HU, 1/4 width, black	Coupler module	SN®	-	1/4	24	SM
EU	EAVT34B24SNV	VersaTray® coupler module 24F OM4, purple SN® coupler, 1/3 HU, 1/4 width, black	Coupler module	SN®	-	1/4	24	OM4
EU	EAVT36B8MDB	VersaTray® coupler module 8F SM, blue MDC coupler, 1/3 HU, 1/6 width, black	Coupler module	MDC	-	1/6	8	SM
EU	EAVT36B8MDV	VersaTray® coupler module 8F OM4, purple MDC coupler, 1/3 HU, 1/6 width, black	Coupler module	MDC	-	1/6	8	OM4
EU	EMVT34BB32SMORMDBO	VersaTray® module 32F SM, blue MDC coupler to 4 x MTP® 4+4 OCTO, centered opposed keys coupler, green, 1/3 HU, 1/4 width, black	Module	MDC	MTP®	1/4	32	SM
EU	EMVT34BB32CMAGMDVO	VersaTray® module 32F OM4, purple MDC coupler to 4 x MTP® 4+4 OCTO, centered aligned keys coupler, grey, 1/3 HU, 1/4 width, black	Module	MDC	MTP®	1/4	32	OM4
EU	EAVT34B16MDB	VersaTray® coupler module 16F SM, blue MDC coupler, 1/3 HU, 1/4 width, black	Coupler module	MDC	-	1/4	16	SM
EU	EAVT34B16MDV	VersaTray® coupler module 16F OM4, purple MDC coupler, 1/3 HU, 1/4 width, black	Coupler module	MDC	-	1/4	16	OM4
EU	EAVT36B48MOR	VersaTray® coupler module, 4 SM ports with internal shutter, green, centered opposed key type A MPO coupler, 1/3 HU, 1/6 width, black	Coupler module	MPO	-	1/6	32	SM
EU	EAVT36B48MOG	VersaTray® coupler module, 4 OM4 ports with internal shutter, grey, centered aligned key type B MPO coupler, 1/3 HU, 1/6 width, black	Coupler module	MPO	-	1/6	32	OM4
EU	EAVT34B72MOR	VersaTray® coupler module, 6 SM ports with internal shutter, green, centered opposed key type A MPO coupler, 1/3 HU, 1/4 width, black	Coupler module	MPO	-	1/4	48	SM
EU	EAVT34B72MOG	VersaTray® coupler module, 6 OM4 ports with internal shutter, grey, centered aligned key type B MPO coupler, 1/3 HU, 1/4 width, black	Coupler module	MPO	-	1/4	48	OM4

Modules suitable for cabling with breakout trunks with I-F nx12 fibers = 6 channel PreCONNECT® DUODECIM



	Suitable for trays with 1/6 width division		Suitable for trays with 1/4 width division		
					
Module variant	24F MDC	4 ports MPO	12F LC	24F SN®	6 ports MPO
Module to MTP®	x		x	x	
Coupler module:		x	x	x	x

Ordering data for modules:

Region	Order number	Description	Product	Connector system, front	Connector system, back	Size	Fiber count	Fiber type
EU	EMVT36BB24SMORMDBD	VersaTray® module 24F SM, blue MDC coupler to 2 x MTP® 12 DUODECIM, centered opposed keys coupler, green, 1/3 HU, 1/6 width, black	Module	MDC	MTP®	1/6	24	SM
EU	EMVT36BB24CMAGMDVD	VersaTray® module 24F OM4, purple MDC coupler to 2 x MTP® 12 DUODECIM, centered aligned keys coupler, grey, 1/3 HU, 1/6 width, black	Module	MDC	MTP®	1/6	24	OM4
EU	EAVT36B48MOR	VersaTray® coupler module, 4 SM ports with internal shutter, green, centered opposed key type A MPO coupler, 1/3 HU, 1/6 width, black	Coupler module	MPO	-	1/6	48	SM
EU	EAVT36B48MOG	VersaTray® coupler module, 4 OM4 ports with internal shutter, grey, centered aligned key type B MPO coupler, 1/3 HU, 1/6 width, black	Coupler module	MPO	-	1/6	48	OM4
EU	EAVT34B72MOR	VersaTray® coupler module, 6 SM ports with internal shutter, green, centered opposed key type A MPO coupler, 1/3 HU, 1/4 width, black	Coupler module	MPO	-	1/4	72	SM
EU	EAVT34B72MOG	VersaTray® coupler module, 6 OM4 ports with internal shutter, grey, centered aligned key type B MPO coupler, 1/3 HU, 1/4 width, black	Coupler module	MPO	-	1/4	72	OM4

EU	EMVT34BB12SMORLTBS	VersaTray® module 12F SM, blue LC coupler with internal shutter to MTP® 12 DUODECIM, centered opposed keys coupler, green, 1/3 HU, 1/4 width, black	Module	LC	MTP®	1/4	12	SM
EU	EMVT34BB12SMORLTGS	VersaTray® module 12F SM, green LC coupler with internal shutter to MTP® 12 DUODECIM, centered opposed keys coupler, green, 1/3 HU, 1/4 width, black	Module	LC	MTP®	1/4	12	SM
EU	EMVT34BB12CMAGLTVS	VersaTray® module 12F OM4, purple LC coupler with internal shutter to MTP® 12 DUODECIM, centered aligned keys coupler, black, 1/3 HU, 1/4 width, black	Module	LC	MTP®	1/4	12	OM4
EU	EAVT34B12LTBS	VersaTray® coupler module 12F SM, blue LC coupler with internal shutter, 1/3 HU, 1/4 width, black	Coupler module	LC	-	1/4	12	SM
EU	EAVT34B12LTGS	VersaTray® coupler module 12F SM, green LC coupler with internal shutter, 1/3 HU, 1/4 width, black	Coupler module	LC	-	1/4	12	SM
EU	EAVT34B12LTVS	VersaTray® coupler module 12F OM4, purple LC coupler with internal shutter, 1/3 HU, 1/4 width, black	Coupler module	LC	-	1/4	12	OM4
EU	EMVT34BB24SMORSNBD	VersaTray® module 24F SM, blue SN® coupler to 2 x MTP®12 DUODECIM, centered opposed keys coupler, green, 1/3 HU, 1/4 width, black	Module	SN®	MTP®	1/4	24	SM
EU	EMVT34BB24CMAGSNVD	VersaTray® module 24F OM4, purple SN® coupler to 2 x MTP® 12 DUODECIM, centered aligned keys coupler black, 1/3 HU, 1/4 width, black	Module	SN®	MTP®	1/4	24	OM4
EU	EAVT34B24SNB	VersaTray® coupler module 24F SM, blue SN® coupler, 1/3 HU, 1/4 width, black	Coupler module	SN®	-	1/4	24	SM
EU	EAVT34B24SNV	VersaTray® coupler module 24F OM4, purple SN® coupler, 1/3 HU, 1/4 width, black	Coupler module	SN®	-	1/4	24	OM4


Modules suitable for cabling with breakout trunks with I-F nx16 fibers = 8 channel PreCONNECT® SEDECIM

	Suitable for trays with 1/6 width division		Suitable for trays with 1/4 width division	
				
Available module types	16F SN®	4x MPO	32F MDC	6x MPO
Module to MTP®	x		x	
Coupler module:	x	on request		on request

Region	Order number	Description	Product	Connector system, front	Connector system, back	Size	Fiber count	Fiber type
EU	EMVT36BB16SMORSNBS	VersaTray® module 16F SM, blue SN® coupler to MTP® 16 SEDECIM, off-centered opposed keys coupler, green, 1/3 HU, 1/6 width, black	Module	SN®	MTP®	1/6	16	SM
EU	EMVT36BB16CMOGSNVS	VersaTray® module 16F OM4, purple SN® coupler to MTP® 16 SEDECIM, off-centered opposed keys coupler, white, 1/3 HU, 1/6 width, black	Module	SN®	MTP®	1/6	16	OM4
EU	EAVT36B16SNB	VersaTray® coupler module 16F SM, blue SN® coupler, 1/3 HU, 1/6 width, black	Coupler module	SN®	-	1/6	16	SM
EU	EAVT36B16SNV	VersaTray® coupler module 16F OM4, purple SN® coupler, 1/3 HU, 1/6 width, black	Coupler module	SN®	-	1/6	16	OM4




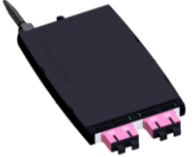
EU	EMVT34BB32SMORMDBS	VersaTray® module 32F SM, blue MDC coupler to 2 x MTP® 16 SEDECIM, off-centered opposed keys coupler, green, 1/3 HU, 1/4 width, black	Module	MDC	MTP®	1/4	32	SM
EU	EMVT34BB32CMAGMDVS	VersaTray® module 32F OM4, purple MDC coupler to 2 x MTP® 16 SEDECIM, off-centered opposed keys coupler, white, 1/3 HU, 1/4 width, black	Module	MDC	MTP®	1/4	32	OM4
EU	on request	VersaTray® coupler module, 4 SM ports with internal shutter, green, centered opposed key type A MPO coupler, 1/3 HU, 1/6 width, black	Coupler module	MPO	-	1/6	64	SM
EU	on request	VersaTray® coupler module, 4 OM4 ports with internal shutter, white, off-centered opposed key type A MPO coupler, 1/3 HU, 1/6 width, black	Coupler module	MPO	-	1/6	64	OM4
EU	on request	VersaTray® coupler module, 6 SM ports with internal shutter, green, off-centered opposed key type A MPO coupler, 1/3 HU, 1/4 width, black	Coupler module	MPO	-	1/4	96	SM
EU	on request	VersaTray® coupler module, 6 OM4 ports with internal shutter, white, off-centered opposed key type A MPO coupler, 1/3 HU, 1/4 width, black	Coupler module	MPO	-	1/4	96	OM4

Splice modules

	Suitable for trays with 1/4 width division
	
Available module types	12F LC
Splice modules	x

Region	Order number	Description	Product	Connector system, front	Connector system, back	Size	Fiber count	Fiber type
EU	ELVT34B12LTBSF2L01	VersaTray® splice module 12F SM, blue LC coupler with internal shutter, LC blue pigtails SM BI single fiber, 1/3 HU, 1/4 width, black	Splice module	LC	Strain relief	1/4	12	SM
EU	ELVT34B12LTGSF2L02	VersaTray® splice module 12F SM, green LC coupler with internal shutter, LC green pigtails SM BI single fiber, 1/3 HU, 1/4 width, black	Splice module	LC	Strain relief	1/4	12	SM
EU	ELVT34B12LTVSF2L03	VersaTray® splice module 12F OM4, purple LC coupler with internal shutter, LC black pigtails OM4 BI single fiber, 1/3 HU, 1/4 width, black	Splice module	LC	Strain relief	1/4	12	OM4
EU	ELVT34B12LTBSFTL01	VersaTray® splice module 12F SM, blue LC coupler with internal shutter, LC blue pigtails SM BI ribbon fiber, 1/3 HU, 1/4 width, black	Splice module	LC	Strain relief	1/4	12	SM
EU	ELVT34B12LTGSFTL02	VersaTray® splice module 12F SM, green LC coupler with internal shutter, LC green pigtails SM BI ribbon fibers, 1/3 HU, 1/4 width, black	Splice module	LC	Strain relief	1/4	12	SM
EU	ELVT34B12LTVSFTL03	VersaTray® splice module 12F OM4, purple LC coupler with internal shutter, LC black pigtails OM4 BI ribbon fibers, 1/3 HU, 1/4 width, black	Splice module	LC	Strain relief	1/4	12	OM4

Other modules

	Suitable for trays with 1/6 width division	Suitable for trays with 1/4 width division		
				
Available module types	Blank module	Blank modules	4F E-2000®	4F SC
Coupler module:			x	x
Blank modules	x	x		

Ordering data for

Region	Order number	Description	Product	Connector system, front	Connector system, back	Size	Fiber count	Fiber type
EU	EAVT3600B	VersaTray® blank module, 1/3 HU, 1/6 width division	Blank module	-	-	1/6	-	-
EU	EAVT3400B	VersaTray® blank module, 1/3 HU, 1/4 width division	Blank module	-	-	1/4	-	-
EU	EAVT34B04E2G	VersaTray® coupler module 4F SM, green E-2000® coupler, 1/3 HU, 1/4 width, black	Coupler module	E-2000®	-	1/4	4	SM
EU	EAVT34B04SDB	VersaTray® coupler module 4F SM, blue SC duplex coupler, 1/3 HU, 1/4 width, black	Coupler module	SC	-	1/4	4	SM
EU	EAVT34B04SDG	VersaTray® coupler module 4F SM, green SC duplex coupler, 1/3 HU, 1/4 width, black	Coupler module	SC	-	1/4	4	SM

About Rosenberger OSI

Ever since 1991, Rosenberger **Optical Solutions & Infrastructure** (Rosenberger OSI) has been an acknowledged expert in the field of optical fiber-based connection technology, cabling solutions and infrastructure services for data centers, LANs, wireless networks and industrial applications. As an integrated solution provider, we have considerable development expertise and excel in the operational production of system solutions for communications networks. Our comprehensive services permit the secure, efficient operation of digital infrastructures. This combination combined with our commitment to our customers makes us unique and a strong partner in the global market.

Since 1998, Rosenberger OSI has been part of the globally active Rosenberger Group, one of the world's leading suppliers of high-frequency, high-voltage and fiber-optic connection solutions which has its head office in Germany.

For more information, go to: www.rosenberger.com/osi

Rosenberger

Rosenberger-OSI GmbH & Co. OHG

Optical Solutions & Infrastructure | Endorferstr. 6 | 86167 Augsburg | Phone: +49 821 24924-0
info-osi@rosenberger.com | www.rosenberger.com/osi

Rosenberger® is a registered trademark of Rosenberger Hochfrequenztechnik GmbH & Co. KG. All rights reserved. © Rosenberger 2024

For technical reasons, we must reserve the right to make changes compared to the depictions printed in the product information.
Transfer to a third party only with the agreement of Rosenberger-OSI GmbH & Co. OHG. All rights reserved.

Creation date: 18 March 2024
Revision creation date: 16 January 2025
Revision: 006