

Rosenberger

PreCONNECT® COPPER

PRODUCT INFORMATION



Applications:

Infrastructure and IT room cabling within data centers

System consists of:

- Factory assembled 6 channel Cu breakout cables with foil tape, Cat.7 S/FTP, AWG23/1 and 26/7, FRNC-LSZH indoor cable
- With shielded Cat. 6A RJ45 Keystone jack modules and plugs
- Suitable 19" panels
- Suitable RJ45 patchcords
- Useful accessories

Features:

- 10GBASE-T class E_A permanent link with AWG23/1 cable up to 90 meters
- 10GBASE-T class E_A permanent link with AWG26/7 cable up to 60 meters
- AWG23/1 only with RJ45 Keystone jack modules
- AWG26/7 with RJ45 Keystone jack modules and plugs
- Diverse 19" panel selectable

Your benefits at a glance:

- Flexibility through application specific individually configurable leg lengths and AWG26/7 deliverable with both RJ45 Keystone jack modules and plugs
 - Fast and safe installation through factory assembled Plug & Play systematic
 - Highest quality and cost-efficiency through factory assembling
- PreCONNECT® cabling systems consist of perfectly harmonized modular single components



PreCONNECT® COPPER trunk



PreCONNECT® COPPER 19" panels



Mix PreCONNECT® FIBER and COPPER



PreCONNECT® COPPER multijumper



PreCONNECT® COPPER patchcords



Accessories



PreCONNECT® COPPER are factory assembled copper data cable trunks and multijumper for „Plug-and-Play“ installations:**PreCONNECT® COPPER trunk:**

- 6 channel Cu breakout with foil tape, Cat.7 S/FTP, AWG23/1 and AWG26/7,
- FRNC-LSZH indoor cable, CPR class Dca
- Both sides assembled with shielded Cat. 6A RJ45 jacks
- Polarity: 1:1 TIA 568 A
- AWG23/1 applicable for PoE+
- AWG26/7 applicable for PoE
- Length of permanent link 10GBASE-T class EA max. 90m



GHMT TA certificate no.: c5868X-XX

PreCONNECT® COPPER multijumper:

- 6 channel Cu breakout with foil tape, Cat.7 S/FTP, AWG26/7, FRNC-LSZH indoor cable, CPR class Eca
- Alternatively assembled with shielded Cat. 6A RJ45 jacks and plugs
- Polarity: 1:1 TIA 568 A
- Applicable for PoE
- Length of permanent link 10GBASE-T class EA max. 60m, instead of the standardized 90m

**Possible variants:**

- plug - jack
- plug - plug

Like our factory assembled PreCONNECT® FO-Trunks and Multijumpers, our PreCONNECT® COPPER trunks and multijumpers are predestined for fast, easy and secure „Plug-and-Play“ installations in Data Centers. The decisive advantage is the surpassing fast installation time and you don't need qualified personnel with tools and measurement equipment for the installation.

For conventional installations of copper data cables there are usually some installers working for a longer period of time inside of the sensitive security areas of your Data Center. To carry out the time consuming on-site termination of the RJ45 jacks or plugs onto the copper cables.

Due to the stranding and the thin foil tape the cables are highly bending flexible and through this installation-friendly. And they have a thinner outer diameter, lower fire-load and weight compared to other cables of that type, they typically have a real thick outer cable jacket.

PreCONNECT® COPPER trunks are delivered in our well known factory assembled high PreCONNECT® quality and „plug-and-play“ functionality and 100% factory measured of course. You merely must lay the cable and snap the RJ45 jacks into the 19" panels.

Cable types:

For PreCONNECT® COPPER trunks jack – jack:

6-channel Cu breakout cable, Cat.7 S/FTP, AWG23/1, FRNC-LSZH indoor cable
Dätwyler Uninet® 7002 6x4P Breakout Light

- 6 stranded copper data cables taped with a self-extinguishing, halogen-free transparent foil tape, Cat.7 S/FTP, solid wire AWG23/1
- Diameter = 22.3mm
- CPR class Dca
- Applicable for PoE+
- Length of permanent link 10GBASE-T class EA max. 90m
- NVP for length measurement = 81%



For PreCONNECT® COPPER trunks jack – jack and PreCONNECT® COPPER multijumper plug – jack and plug - plug:

6-channel Cu breakout cable, Cat.7 S/FTP, AWG26/7, FRNC-LSZH indoor cable
Dätwyler Uninet® 7702 6x4P Breakout Light

- 6 stranded copper data cables taped with a self-extinguishing, halogen-free transparent foil tape, Cat.7 S/FTP, flex braid wire AWG26/7
- Diameter = 17.6mm
- CPR class Eca
- Applicable for PoE
- Length of permanent link 10GBASE-T class EA max. 60m, instead of the standardized 90m
- NVP for length measurement = 78%



RJ45 Keystone jack module:

Shielded Cat.6A ISO/IEC RJ45 Keystone jack module
GHMT PVP certificate no.: z4686X-XX-E

RJ45 plug:

Shielded Cat.6A ISO/IEC RJ45 plug with 1 component boot with latch protection



RJ45 plug

RJ45 Keystone jack module



Leg lengths:

Leg lengths of RJ45 jacks selectively:

- (sl) legs of the same length to run the cable straight from the rear side to the panel
- (stl) legs with stepped lengths to run the cable from either both sides to the panel

!!! if you order (stl) stepped legs, you must state if you want to run the cable either from the left or from the right side to the panel, view from the rear, like shown below (necessary because of the numbering of the legs).

If legs „stepped for running from the left“ the longest leg is number 1 and the shortest number 6.

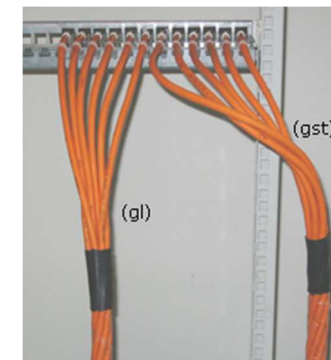
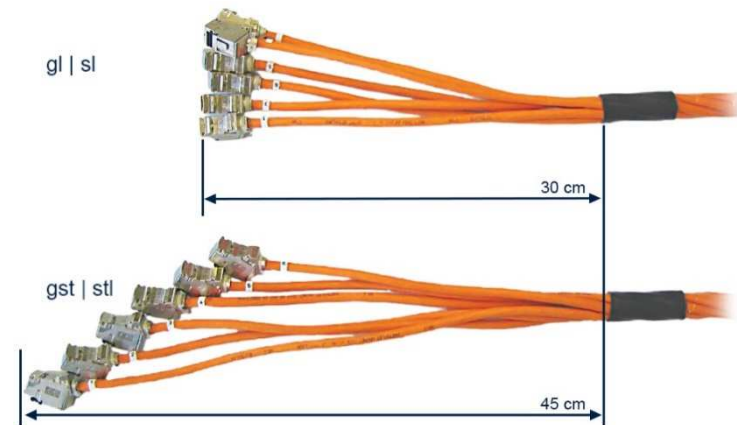
If legs „stepped for running from the right“ the longest leg is number 6 and the shortest number 1.

View from the rear onto the panel like shown here:

- (sl) same length legs
- (stl) stepped lengths legs running to the panel from the right

Leg lengths of RJ45 plugs:

Can be ordered in variable lengths.



Installation protection:

For secure installation the factory assembled RJ45 jacks and plugs you can select between these both installation protection variants:

- EZS: pull force and crush resistant and dust-proof
- ZS: pull force resistant and dust-proof



Part numbers:

PreCONNECT® COPPER trunk RJ45 jacks on both sides Length: variable		
Cable type	Leg lengths on both sides	Part numbers
6-channel, Cat.7 S/FTP, AWG23/1	same length stepped for from the left side stepped for from the right side	047A0101 047A0111 047A0121
6-channel, Cat.7 S/FTP, AWG26/7	same length stepped for from the left side stepped for from the right side	047A0130 on request 047A0136



PreCONNECT® COPPER multijumper Cable type: 6-channel, Cat.7 S/FTP, AWG26/7 Length: variable Leg lengths: variable		
Side A	Side B	Part numbers
RJ45 plugs at same length legs	RJ45 jacks at same length legs	047A0131
RJ45 plugs at same length legs	RJ45 plugs at same length legs	047A0132



Delivery form: Dependent on the length as cable ring or on cardboard or wooden drum with installation instruction and measurement protocol.

Length definition: Order length = length between the RJ45 jacks and plugs at both sides

Maximum order-lengths = maximum 10GBASE-T permanent link length:

- AWG23/1 = 90m
- AWG26/7 = 60m

Trunk length	Tolerance
<= 10m	+/- 50cm
> 10m <= 30m	+/- 100cm
> 30m <= 90m	+/- 150cm

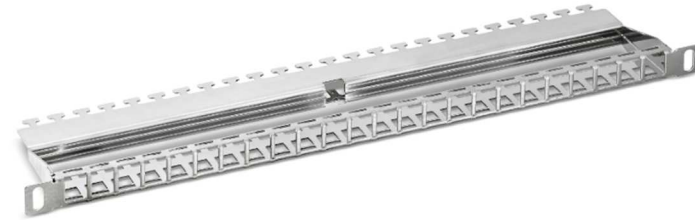
PreCONNECT® COPPER 19“ panels:**0.5 HU fits for 24 Keystone Jacks:**

Two pcs. of this Panel above e.o. add up to 48 RJ45 Ports per HU

Material: stainless steel

Depth: 100mm

Part number: 800A0220

**1 HU fits for 24 Keystone Jacks:**

Material: Steel, powder-coated

Depth: 150mm

Part numbers:

RAL 7035 light gray: 800A0213

RAL 9005 black: 800A0214

**1 HU fits for 24 Keystone Jacks, 30° cable routing:**

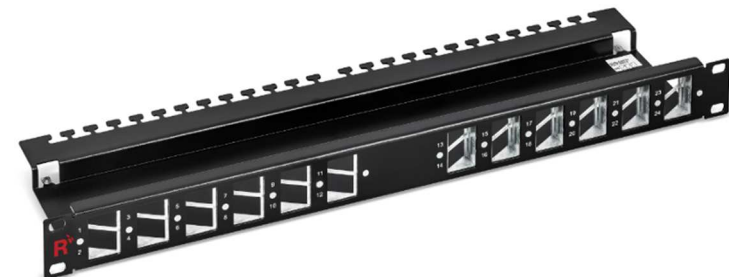
Material: Steel, powder-coated

Depth: 120mm

Part numbers:

RAL 7035 light grey: 800A0219

RAL 9005 black: 800A0218



Mix PreCONNECT® FIBER and COPPER within

PreCONNECT® SMAP-G2 SD



SMAP-G2 SD 19" empty distribution panels, RAL9005 black backplane with 12 PreCONNECT® square interfaces see product information PreCONNECT® SMAP-G2 SD

Part number 1 HU, depth 300mm: **171A0001**



Fixing of PreCONNECT® COPPER trunks at panel back plane using PreCONNECT® universal cable fixture. For cable diameters 6 to 18 mm.

! This does not fit for PreCONNECT® COPPER trunks with 22.3mm thick AWG23 cable. For this find other back plane options in product information PreCONNECT® SMAP-G2 SD.

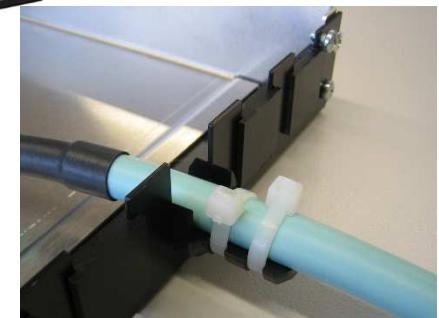
Part number set incl. two cable ties: **111A0650**

PreCONNECT® SMAP-G2 HD



SMAP-G2 HD 19" empty distribution panels, RAL9005 black backplane with 12 PreCONNECT® square interfaces see product information PreCONNECT® SMAP-G2 HD

Part number 1 HU, 4/4 DUODECIM width partition, depth 300mm: **171H0010**



SMAP-G2 SD 6 Port RJ45 Keystone part front plate fitting for PreCONNECT® COPPER trunks with RJ45 Keystone Jacks:

Properties:

- Fitting in SMAP-G2 SD panels
- For 6 RJ45 Keystone Jacks
- Height: 1 HU
- Width: 1/4
- Toolless placement of the module cassettes into the panel from the front side, fixing with quick fasteners
- Inclusive 2m long grounding cable to connect the PFP, grounding cable is to be routed out of the panel through its back plane and attached at the grounding point of the rack
- Material and colour: steel powder coated RAL9005 black

Part numbers RAL9005 black: **170A4010**

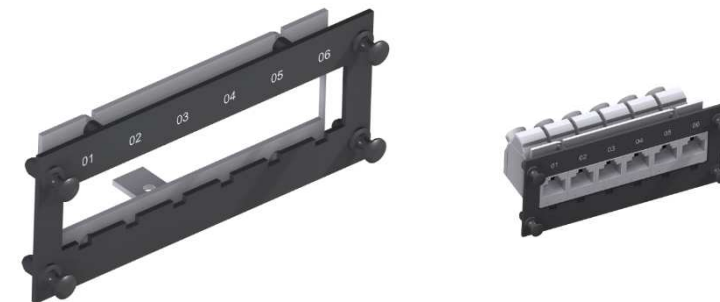


SMAP-G2 HD 6 Port RJ45 Keystone part front plate fitting for PreCONNECT® COPPER trunks with RJ45 Keystone Jacks:

Properties:

- Fitting in SMAP-G2 HD panel with 4/4 DUODECIM width partition
- For 6 RJ45 Keystone Jacks
- Height: 1 HU
- Width: 1/4
- Toolless placement of the module cassettes into the panel from the front side, fixing with quick fasteners
- Inclusive 2m long grounding cable to connect the PFP, grounding cable is to be routed out of the panel through its back plane and attached at the grounding point of the rack
- Material and colour: steel powder coated RAL9005 black

Part numbers RAL9005 black: **170H7000**



RJ45 Cat. 6A patchcords:

- Cat. 6A ISO/IEC
- Polarity 1:1 TIA 568 B
- Applicable for PoE+
- Shielded RJ45 connectors with 2 component boot with latch protection and protective cap on both sides.
- Cable type: Cat.7, S/FTP, flex, 4 foil-screened AWG27/7 pairs,
- Up to 900 MHz, FRNC-LSZH, diameter 5.7mm, color grey
- Other lengths, colors and types on request
- GHMT PVP certificate no.: z4826a-xx-E

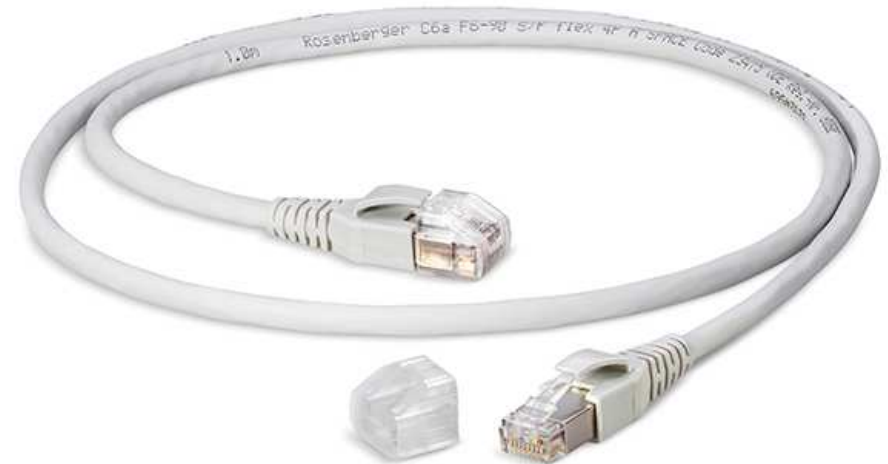
Length	Part numbers
1 meter	820A1019M-1
2 meter	820A1019M-2
3 meter	820A1019M-3
5 meter	820A1019M-5
10 meter	820A1019M-10

On request:

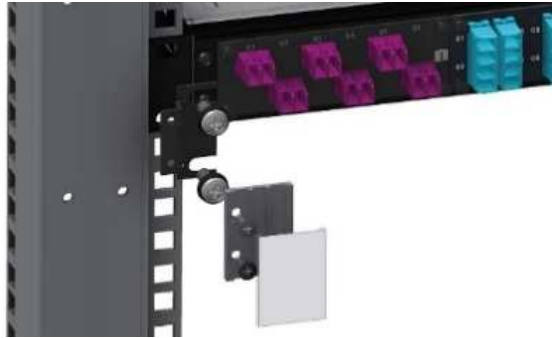
RJ45 Cat. 6A patchcord, AWG26/7 = 5.8mm, with RJ45 Push-Pull connector

Thin RJ45 Cat. 6A patchcords:

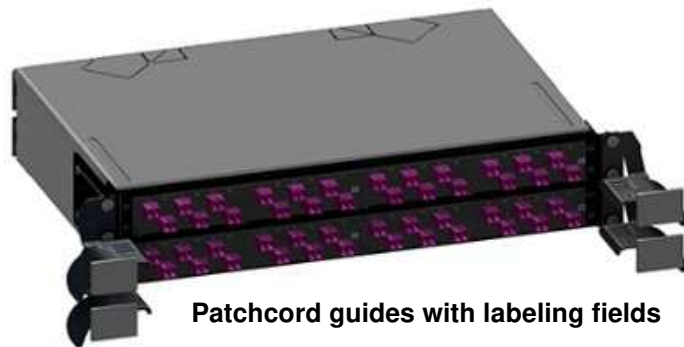
- S/FTP AWG30 = 4.5mm
- S/FTP AWG32 = 4.0mm



For 19" panel accessories see our product information 19" panel accessories:



Labeling fields



Patchcord guides with labeling fields



Patchcord manager

- height units saving (0 HU) mountable in front of 19" panels
- with foldaway front cover
- with optional labelling and port address fields



About Rosenberger OSI:

Since 1991, Rosenberger Optical Solutions & Infrastructure (Rosenberger OSI) has been an expert in innovative fiber optic cabling infrastructure and service solutions for Data Centers, Local Networks, Telecom and Industrial.

The products and services can be found wherever largest amounts of data have to be transferred quickly and securely. In addition to the development and production of a broad portfolio of fiber optic and copper cabling systems, Rosenberger OSI also offers a variety of services such as planning, installation and maintenance of cabling infrastructure. Rosenberger OSI has been a part of the globally operating Rosenberger Group since 1998, a worldwide leading provider of high-frequency-, high-voltage-, and fiber-optic-connection solutions headquartered in Germany.

For further information, please visit: www.rosenberger.com/osi

Rosenberger

Rosenberger-OSI GmbH & Co. OHG

Optical Solutions & Infrastructure | Endorferstr. 6 | 86167 Augsburg | GERMANY | Telefon: +49 821 24924-0
info-osi@rosenberger.com | www.rosenberger.com/osi

Rosenberger® is a registered trademark of Rosenberger Hochfrequenztechnik GmbH & Co. KG. All rights reserved. © Rosenberger 2018

For technical reasons, we reserve us the right to make any deviations from the illustrations in the product information
Transfer to third party only by authority of Rosenberger-OSI GmbH & Co. OHG- All rights reserved

Creation date: 2007-05-22
Valid since: 2020-07-23
Revision 013