

## PreCONNECT® smartNET 19" Compact Cabinet

### INSTALLATION MANUAL



---

1	Before starting installation .....	3
2	Safety instructions .....	4
3	Product description .....	5
4	Mounting the basic housing .....	6
5	Assembly of equipment and accessories .....	8

# 1 BEFORE STARTING INSTALLATION



These installation instructions contain important information to assist you in using the enclosure as intended. The installation instructions are intended for qualified, instructed and trained personnel who are tasked with mounting the enclosure on existing infrastructures.



- Every person involved in the assembly, operation and repair of the product must have read and understood the instructions. We accept no liability for damage and malfunctions resulting from non-compliance with the instructions.
- We make every effort to ensure that these installation instructions are correct and up to date. In order to maintain our technological lead, it may be necessary to make changes to the product and its operation without prior notice. We accept no liability for malfunctions, failures and any resulting damage.
- Please also note any additional information supplied.

## 1.1 Environment

We are constantly developing our products. Please understand if the delivered product does not match the illustrations in all parts.

Please return the packaging waste to the raw material cycle. Thank you!



## 2 SAFETY INSTRUCTIONS

### 2.1.1 Personal protective equipment



**There is a risk of accidents if the unit is not installed correctly!**

Personal protective equipment must be worn during all activities in the work area described in this manual.

**These include:**

- Suitable safety shoes
- Safety helmet if necessary
- If necessary, suitable protective gloves
- The respective national and local regulations for personal protective equipment must be observed.

At the time of going to press, the product corresponds to the state of the art and is delivered in a safe condition for operation. Unauthorised modifications, especially to safety-relevant parts, are not permitted.

A warning is given against misuse.



The operator is responsible for the installation, operation and maintenance of the fixtures.

**The operator must ensure that this is the case:**

- avert danger to life and limb of the user and third parties.
- To ensure operational safety.
- to exclude loss of use and environmental damage due to incorrect handling.
- That work is done with protective clothing.



- The installation of electrical devices or electrical distributions may only be carried out by personnel approved for this purpose-.

Use is prohibited in the event of damage. Please contact the Hotline

## 3 PRODUCT DESCRIPTION

### 3.1 General information.

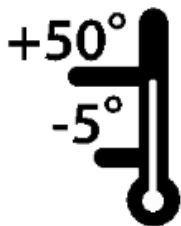
The PreCONNECT® smartNET 19" Compact Cabinet is a modular enclosure system for passive and active network equipment. It is suitable for wall, ceiling or underfloor mounting in protected environments and, depending on the configuration, can accommodate equipment in 10" or 19" format. It has 1, 1.5 or 2U mounting levels. Depending on the configuration and depth of the equipment used, network equipment can also be arranged one behind the other.

Dimensions

W x D x H: 579 x 750 mm x 80mm (1.5U)

W x D x H: 579 x 750 mm x 104mm (2 U)

### 3.2 Installation parameters to be observed



#### Permissible temperature range and heat dissipation

- Storage: -25°C to +70°C
- Installation: -5°C to +50°C
- Passive ventilation in the enclosure allows heat dissipation of a power loss of 60W
- Do not cover the ventilation slots



#### Load on the housing cover

- The housing cover must not be subjected to point loads
- Do not climb onto the housing !
- Do not place any objects on it



#### Payload and tensile strength for wall/ceiling mounting

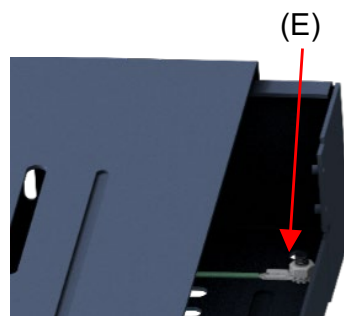
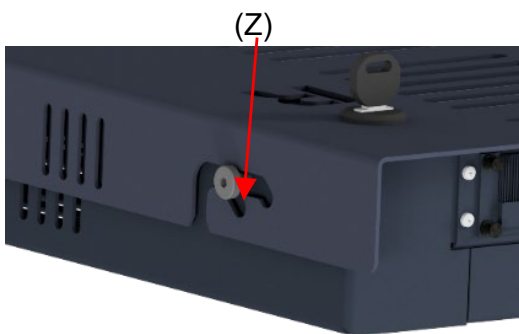
- All fixtures should not exceed a total weight of 20kg
- For ceiling and wall mounting we recommend dowels with a load capacity of 25kg each

## 4 MOUNTING THE BASE HOUSING

The PreCONNECT® smartNET 19" Compact Cabinet is delivered pre-assembled. The housing cover must be removed for mounting on the ceiling or wall.

### 4.1 Dismantling the housing cover

1. The housing cover is secured by a lock that must first be unlocked with the key, delivered with the cabinet.
2. The housing cover must then be moved upwards or backwards until it engages in the intermediate position (Z). This allows access to the detachable earthing connection (E).

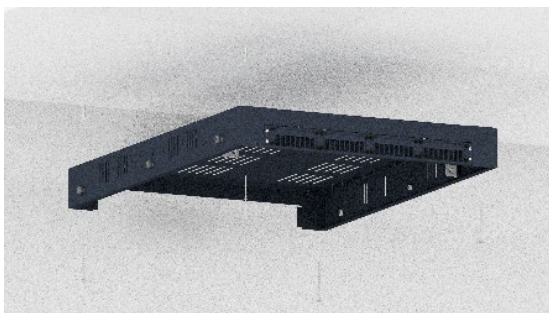


3. After loosening the earthing connection, the cover can be completely removed

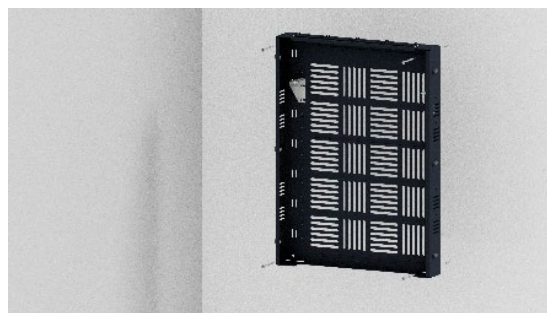
### 4.2 Mounting the enclosure on the wall or ceiling

Holes are provided at the corners of the base enclosure for fixing to the wall or ceiling with 6mm screws. Each of the screw/dowel connections should be able to safely hold a weight of 25kg each.

*Example ceiling mounting*



*Example wall mounting*



The spacing of the drill holes arranged in the rectangle is 705mm lengthwise and 500mm crosswise.

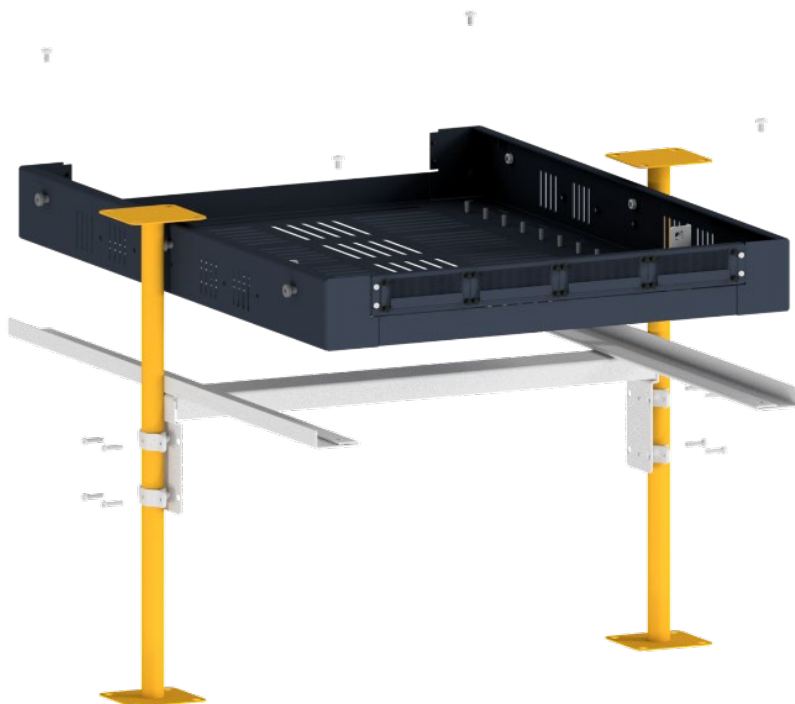


Equipment in the ceiling-mounted enclosure should be secured against accidental loosening and falling down. For this purpose, safety brackets are offered that can be mounted in addition to the built-in equipment !

### 4.3 Mounting the enclosure in the raised floor

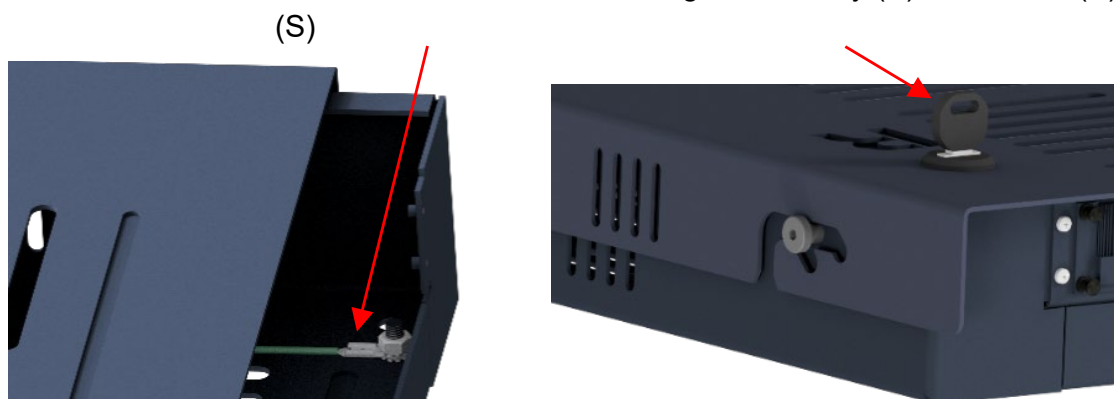
An optional raised floor bracket is offered for mounting the enclosure in the raised floor.

The raised floor bracket (light grey) is mounted between the existing raised floor supports (yellow). The basic housing is placed on the rails of the raised floor support and fixed in place with screws:



### 4.4 Closing the lid

To close the cover again after mounting the basic housing and, if necessary, further installations, make sure that the earthing connection (E) between the basic housing and the cover is re-established beforehand, and then close the housing with the key (S). (E)



## 5 ASSEMBLY OF EQUIPMENT AND ACCESSORIES

### 5.1 Inner installation area

The inner mounting area is characterised by 2 opposing rows of 14 10mm high M5 threaded bolts (G) standing vertically at 45mm intervals, to which the following accessories can be screwed, individually or several times, by means of 2 M5 nuts per mounting side, each with a torque of 4.5Nm

- Bracket (W) for setting up a 19 inch level (1.5U or 2U)
- Bracket for setting up a 10" plane (1.5U or 2U, not shown)
- Mounting plate for mounting 0U equipment

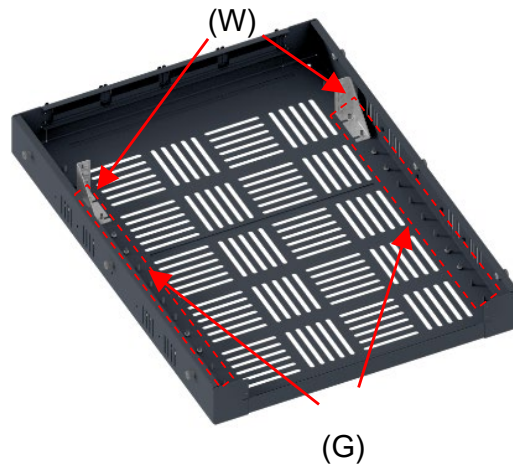


The mounting plate offers the option of attaching equipment with screws or also with Velcro tape.

- Mounting bracket for SMAP splice or distribution modules



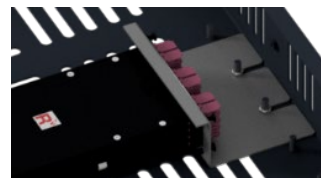
- Retaining plate as a retaining bracket for additional securing of 19" technology against falling down



*Application example:*



*Application example:*



*Application example:*

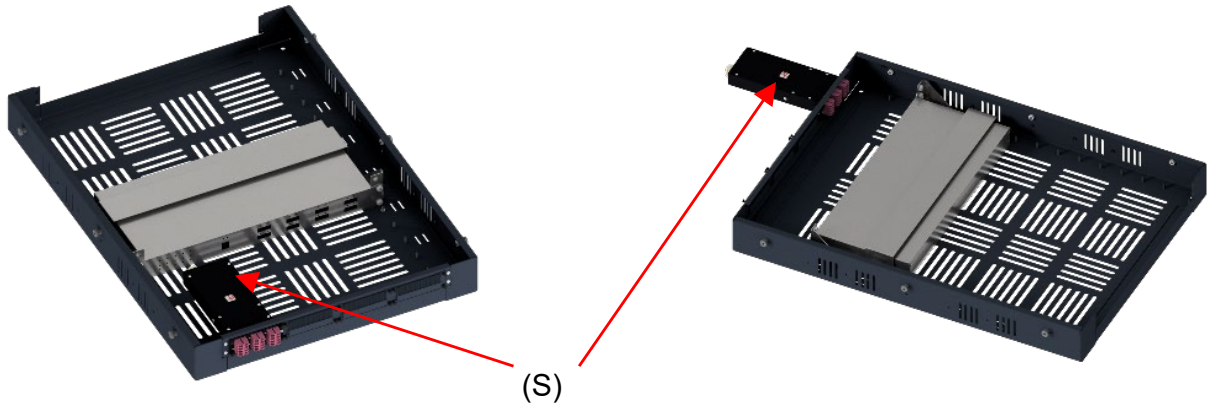




## 5.2 Front installation area

In the front area of the enclosure, SMAP distribution front panels or, for example, splice modules in  $\frac{1}{4}$  pitch can be inserted at 4 (1.5U) or 8 (2U) positions.

*Application examples with splice module (S) in the front area:*



## 5.3 Rear installation area

An installation space for various cable entry options is provided in the rear area. Rear panels of the SMAP-G2 enclosure series are suitable for this. These rear panels are mounted with 4 screws.

*Application example: Cable entry with integrated trunkhead holder for up to 12 trunkheads:*







For more information, see:

[www.rosenberger.com/osi](http://www.rosenberger.com/osi)

## **Rosenberger**

Rosenberger-OSI GmbH & Co. OHG

Optical Solutions & Infrastructure

Endorferstr. 6 | 86167 Augsburg

Phone +49 821 24924-0

[info-osi@rosenberger.com](mailto:info-osi@rosenberger.com)

[www.rosenberger.com/osi](http://www.rosenberger.com/osi)

Rosenberger® is a registered trademark of Rosenberger Hochfrequenztechnik GmbH & Co. KG.

All rights reserved. © Rosenberger 2018